



Snorkel

Automated Sample Repository System

Snorkel

Automated Sample Repository System

Redefining Laboratory Freezer

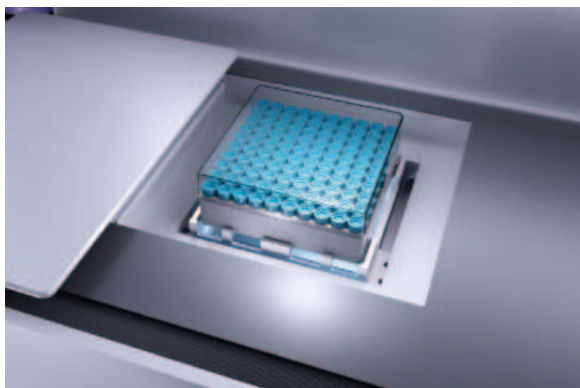
Snorkel is a new generation automated sample repository system. It is fully customer-oriented and combines advanced refrigeration technology, exquisite mechanical engineering design, and user-friendly intelligent interaction, ensuring sample safety and convenient sample management.





150,000
up to 150,000 vials

1,992
with 1,992 mm height



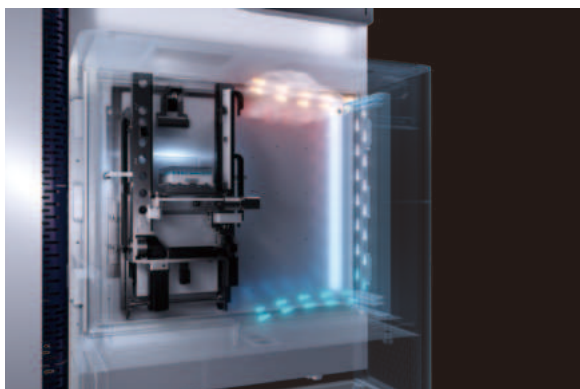
Innovative Sample Retrieval

Automation design enables sample storage and retrieving at low temperatures. The target rack or vial can be obtained in seconds by a simple touch of the screen.



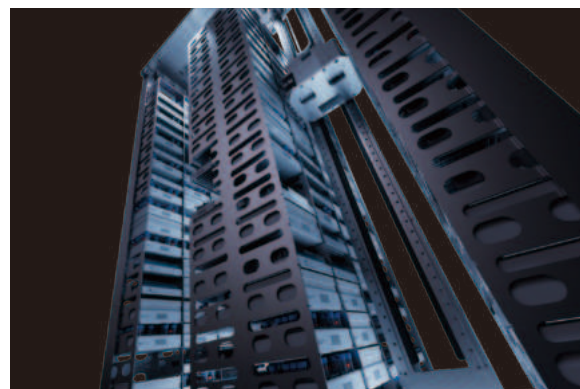
Dedicated Storage Space

With an integrated facial identification, everyone can enjoy their own exclusive space, with guaranteed sample quality and safety. Personal operating preference can also be recorded automatically.



Moisture-Proof Technology

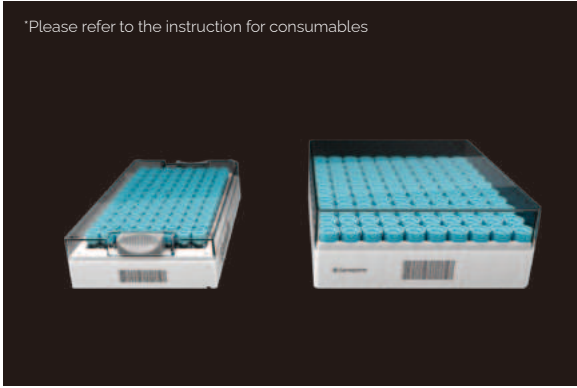
Thermal stratification design creates a natural barrier against convection and minimizes humidity. The front chamber is equipped with an air-cooled dehumidification system, greatly eliminating the need for defrosting.



Ease of Implementation

The compact structural design allows easy transportation and installation without compromising the capacity. No auxiliary devices, such as vacuum pumps or air compressor etc., are required for daily operation. Plugged in and Snorkel is ready for use.

*Please refer to the instruction for consumables

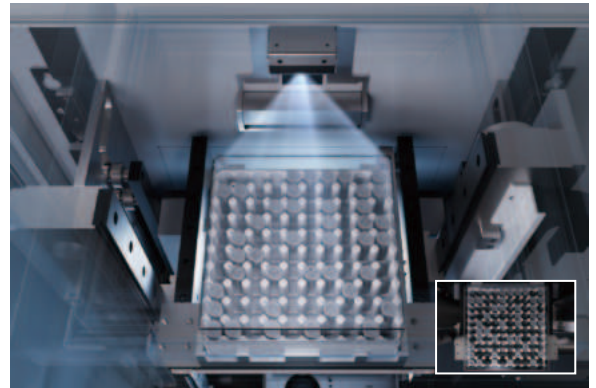
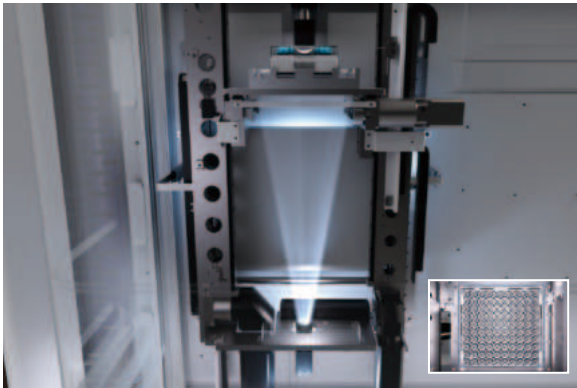


Wide Range of Labware Adaptability

The system is not only adaptable to cryo boxes or SBS racks, but also compatible with most labware options, including EP vials, ELISA plates, PCR plates, 15-50mL centrifuge tubes, and paper cryopreservation boxes, etc..

Sample Safety is Top Priority

Featuring with dual independent cascading systems and liquid nitrogen backup systems, Snorkel can guarantee the safety of your samples. The external door of the storage chamber supports emergency opening for samples transferring. The automated mechanism can be slide off quickly with no impact to the storage environment.



Pre-Installed Sample Management System

The SampleAtlas sample information management system is pre-installed and ready to use. The system provides Research mode and Biobank mode, supporting different information traceability requirements.

Innovative Intelligent Terminal

For samples without DM-code, top view snapshots can easily locate the target samples before samples leaving the storage place, preventing samples from freeze-and-thaw due to prolonged searching.



Effective Management Tool

Snorkel supports defragmentation and cycle counting in low-temperature. Statistical data such as inventory fragmentation rate and storage utilization rate can also be provided.

Parameters and Configuration

Snorkel



Automated Rack Retrieving

Snorkel Max



Up to 150,000 Vial Storage

Snorkel Pro



Automated Vial Retrieving

Snorkel Pro Max



Automated Vial Retrieving with Up to 150,000 Vial Storage

Technical Specifications				
	Snorkel	Snorkel Max	Snorkel Pro	Snorkel Pro Max
Model	SAUF-1000/SAF-1000	SAUF-1500/SAF-1500	AUF-1000/AF-1000	AUF-1500/AF-1500
Adjustable Storage Temperature Range	-50 to -80℃/-10 to -40℃	-50 to -80℃/-10 to -40℃	-50 to -80℃/-10 to -40℃	-50 to -80℃/-10 to -40℃
Automatic Rack Retrieval	Yes	Yes	Yes	Yes
Automatic Vial Retrieval	N/A	N/A	Yes	Yes
Inner Volume	~1,000L	~1,500L	~1,000L	~1,500L
External Dimensions (W*D*H, mm)	1,480*1,400*1,992	1,480*1,802*1,992	1,480*1,570*1,992	1,480*1,972*1,992
Minimum Door Size (W*H, mm)	1,000*2,000	1,400*2,000	1,000*2,000	1,400*2,000
Maximum Capacity* (Cryo boxes, 2 mL)	39,000	63,000	39,000	63,000
Maximum Capacity* (SBS racks, 0.5 / 0.75 mL)	≥90,000	≥150,000	≥90,000	≥150,000
Sample Information Management System	Biobank Mode & Research Mode			
Rack Reader	Optional	Optional	Standard	Standard
Working Conditions	220V, 50Hz; Standard RJ45 Network Port; Recommended Environment Temperature 15℃-28℃ *Products sold in each region comply with the local voltage and frequency requirements.			

* Actual capacity may vary depending on the specifications of the consumables. For further details, please contact your local representative.

Shelf Selection Table (Mandatory Accessories)					
	Maximum Height of Racks/Vials	SAUF-1000/ SAF-1000	SAUF-1500/ SAF-1500	AUF-1000/ AF-1000	AUF-1500/ AF-1500
Cryo Boxes 133*133mm±1mm	≤378mm	SK-C05-1000	SK-C05-1500	SK-C05-1000	SK-C05-1500
	≤53mm	SK-C20-1000	SK-C20-1500	SK-C20-1000	SK-C20-1500
	≤127mm	SK-C150-1000	SK-C150-1500	N/A	N/A
SBS Racks 127.8*85.5mm±0.5mm	≤23.8mm	SK-S03-1000	SK-S03-1500	SK-S03-1000	SK-S03-1500
	≤378mm	SK-S05-1000	SK-S05-1500	SK-S05-1000	SK-S05-1500
	≤58.6mm	SK-S10-1000	SK-S10-1500	SK-S10-1000	SK-S10-1500
	≤49.4mm	SK-S20-1000	SK-S20-1500	SK-S20-1000	SK-S20-1500
	≤95.5mm	SK-S50-1000	SK-S50-1500	SK-S50-1000	SK-S50-1500

Accessories (Apply Only to SAUF/SAF Series)		
	Embedded Rack Reader	Embedded Low-Temperature Operation Platform
Model	SK-TS	SK-MO



Official Website



Linkedin

For more information, please visit www.genepoint.com or email us at info@genepoint.cn.

The product is only for industrial or scientific research purposes, not for medical use.

It must not be used directly or indirectly for clinical diagnosis or other unauthorized clinical medical purposes.